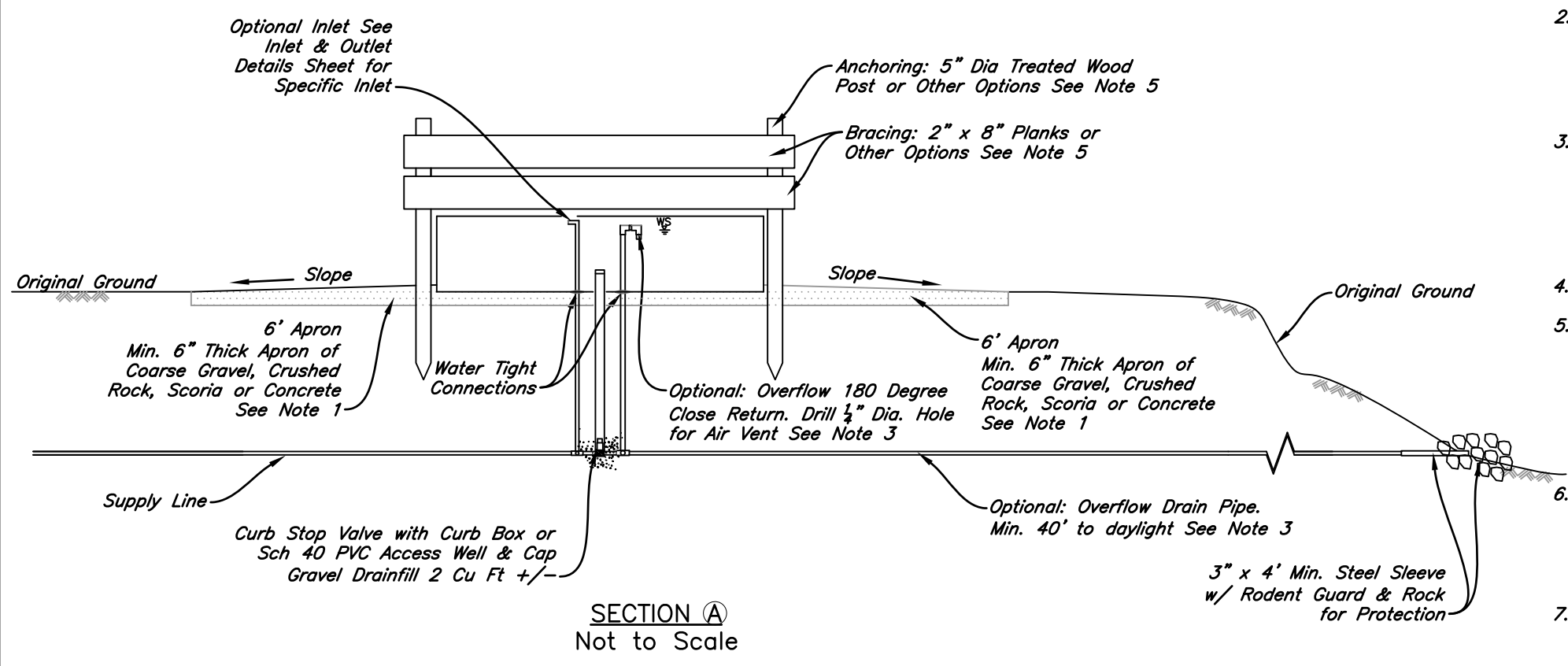


PLAN VIEW
Not to Scale



SECTION A
Not to Scale

Estimated Quantities & Materials				
Diameter Ft.	Capacity Gallons		Foundation CuYd	Apron CuYd
	per inch depth	24" Depth (21" Actual)		
10	49.0	1,028	2.9	4.2
12	70.5	1,480	3.7	4.7
14	96.0	2,015	4.7	5.1
16	125.3	2,632	5.8	5.6
18	158.6	3,331	7.0	6.1
20	195.8	4,112	8.4	6.5
22	236.9	4,976	9.8	7.0
24	282.0	5,922	11.4	7.4
25	306.0	6,426	12.2	7.7
30	440.6	9,253	16.8	8.8
40	783.3	16,449	28.2	11.2
50	1223.9	25,702	42.4	13.5
Tank Capacity will vary by manufacturer				

CONSTRUCTION NOTES

- In all cases the tank and apron area shall be stripped of all organics and the tank placed on a stable, well compacted foundation. Install min 6" of compacted fine gravel or sand on sites with clay soils with high shrink/swell potential. 2" Max. Dia. gravel. Optional on lighter or gravelly soils with little or no potential for shrink/swell. And in accordance with manufacturer's recommendations.
- All fiberglass watering facilities shall have a nominal min. thickness of 1/8" and shall be manufactured in accordance with ASTM-D4097 or ASTM-D3299. Exposed fiberglass watering facilities shall contain ultraviolet (UV) inhibitors or have a durable coating to protect the tank from deterioration due to sunlight
- An overflow and drain pipe Sch 40 PVC with a minimum 2" diameter or at least 1/2" Dia. larger than the supply line, must be installed if the water level in the tank is not controlled with a float. The drain pipe shall be graded to allow drainage and a min. of 40' from the tank. Protect drain pipe at outlet end by backfilling over pipe with field stone.
- Hydrant and float or overflow must be protected.
- Anchoring will be adjacent to the watering facility and embedded in the ground. Anchors can be 1/2" rod, standard T or U section steel post (1.33lb/ft), metal pipe (2 3/8" OD Min.) with cap, treated wood post (5" Top Dia. Min.), or as specified by the manufacturer. Bracing can be 2"x8" planks, metal pipe (2" OD Min.) or guard rail. Other materials and configurations for tank anchoring and bracing will be considered with prior NRCS approval.
- A wildlife escape ramp is required every 30' of the perimeter of the tank with exception for tanks with less than 10 square feet of contiguous open water area. Escape ramps molded into the tank edges by the manufacturer during fabrication are acceptable. See wildlife escape ramp detail sheet.
- PVC pipe shall be made of ultraviolet (UV) resistant materials or shall have a durable coating of UV resistant paint to protect it from deterioration due to sunlight. PVC pipe used for access to appurtenances is exempt from this requirement.

Date _____
 Designed _____
 Drawn Cassie Ahmed 03-22-2024
 Checked _____
 Approved _____

ROUND BYPASS STOCKWATER TANK
 OWNER: _____
 COUNTY: _____

United States Department of Agriculture
 Natural Resources Conservation Service
 File Name ND-DWG-104
 Date 03-22-2024
 Sheet _____ of _____