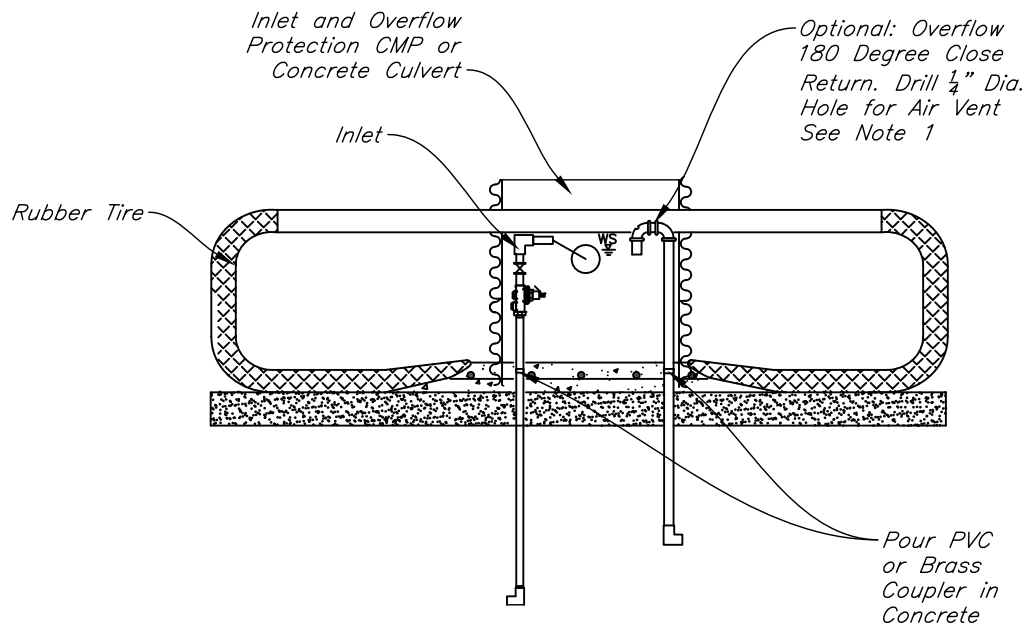
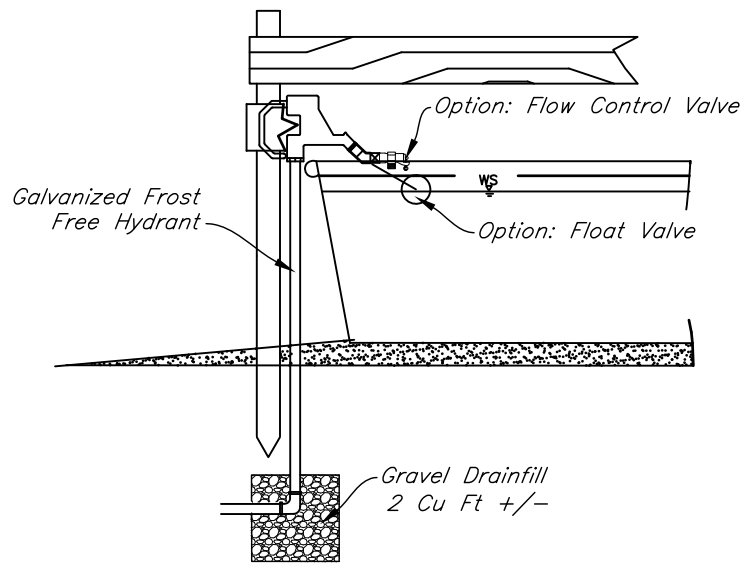


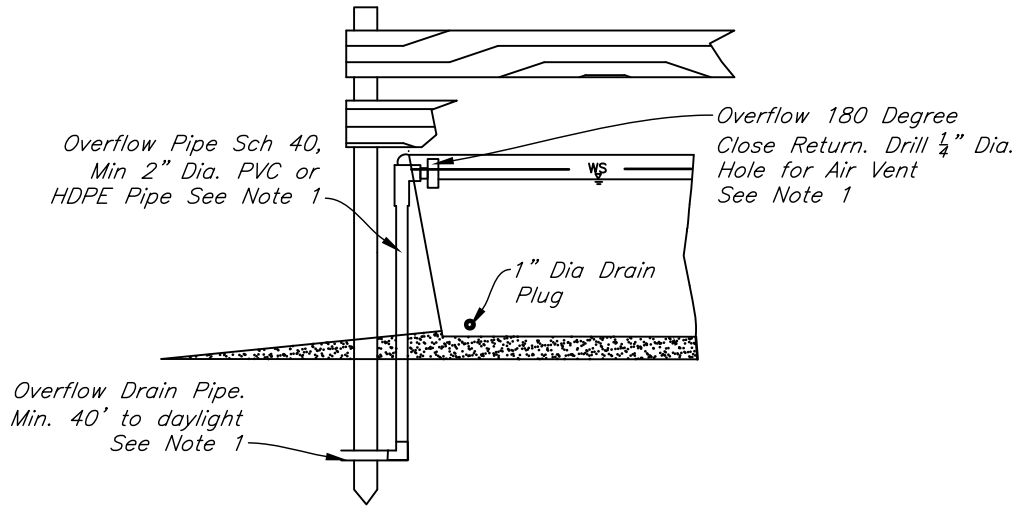
TANK INLET DETAIL 1
Not to Scale



TANK INLET DETAIL 3
Not to Scale



TANK INLET DETAIL 2
Not to Scale



TANK OUTLET DETAIL
WITH SIDE MOUNT DRAIN
Not to Scale

CONSTRUCTION NOTES

1. An overflow and drain pipe Sch 40 PVC with a minimum 2" diameter or at least 1/2" Dia. larger than the supply line, must be installed if the water level in the tank is not controlled with a float. The drain pipe shall be graded to allow drainage and a min. of 40' from the tank. Protect drain pipe at outlet end by backfilling over pipe with field stone.
2. Hydrant and float or overflow must be protected.
3. PVC pipe shall be made of ultraviolet (UV) resistant materials or shall have a durable coating of UV resistant paint to protect it from deterioration due to sunlight. PVC pipe used for access to appurtenances is exempt from this requirement.

Date	
Designed	Cassie Ahmed 03-22-2024
Drawn	
Checked	
Approved	

INLET & OUTLET DETAILS

OWNER: _____
COUNTY: _____

File Name
ND-DWG-105

Date
03-22-2024

Sheet of