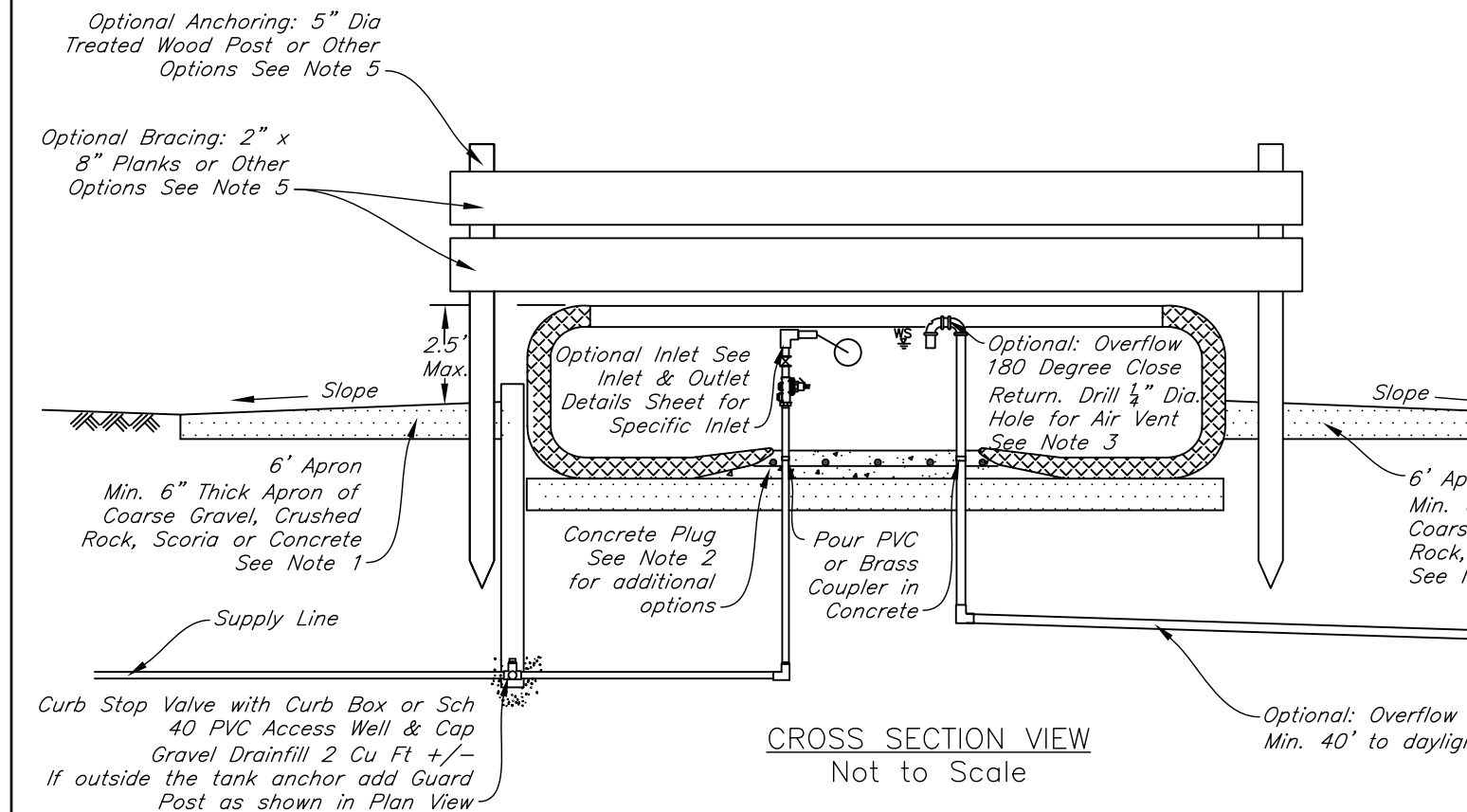


PLAN VIEW
Not to Scale



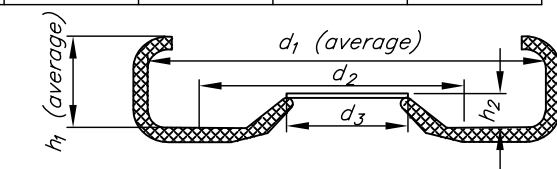
CROSS SECTION VIEW
Not to Scale

CONSTRUCTION NOTES

- In all cases the tank and apron area shall be stripped of all organics and the tank placed on a stable, well compacted foundation. Install min 6" of compacted fine gravel or sand on sites with clay soils with high shrink/swell potential. 2" Max. Dia. gravel. Optional on lighter or gravelly soils with little or no potential for shrink/swell. And in accordance with manufacturer's recommendations.
- Concrete Plug 6" Thick Min. Recommend Reinforcing with #3 Rebar at 12" C.C. or 6" x 6" #10 Wire Mesh. Apply mastic all around on top of concrete plug where it meets the rubber.
 - Additional Plug Options:
 - Bentonite and Bentonite/Silicone Plugs min 12" depth at top of plug with sand and gravel foundation.
 - Steel Plate. Min. of 12-5/8" Dia. "J" Bolts will be used to attach 1/4" Min steel plate. If plate is attached at the top "J" bolts will be 8" on center. If the plate is attached at the bottom of the tire the "J" Bolts will be 12" max. on center. A rubber gasket shall be placed between the steel washer for the bolt and the steel plate. Use a seal coating of black asphalt for the steel plate at the area of attachment in addition to coating the total top and bottom of the plate. Use "elastoseal kote" or equivalent material.
- An overflow and drain pipe Sch 40 PVC with a minimum 2" diameter or at least 1/2" Dia. larger than the supply line, must be installed if the water level in the tank is not controlled with a float. The pipe shall be graded to allow drainage and a min. of 40' from the tank. Protect the pipe at outlet end by backfilling over pipe with field stone.
- Hydrant and float or overflow must be protected.
- Anchoring and bracing is optional. Anchoring will be adjacent to the watering facility and embedded in the ground. Anchors can be 1/2" rod, standard T or U section steel post (1.33lb/ft), metal pipe (2 3/8" OD Min.) with cap, treated wood post (5" Top Dia. Min.), or as specified by the manufacturer. Bracing can be 2"x8" planks, metal pipe (2" OD Min.) or guard rail. Other materials and configurations for tank anchoring and bracing will be considered with prior NRCS approval.
- A wildlife escape ramp is required every 30' of the perimeter of the tank with exception for tanks with less than 10 square feet of contiguous open water area. Escape ramps molded into the tank edges by the manufacturer during fabrication are acceptable. See wildlife escape ramp detail sheet.
- PVC pipe shall be made of ultraviolet (UV) resistant materials or shall have a durable coating of UV resistant paint to protect it from deterioration due to sunlight. PVC pipe used for access to appurtenances is exempt from this requirement.
- Rubber tire, minimum size used rubber tire shall be 33.25-35 heavy equipment tire which is approximately 7' Dia. x 3' wide. Remove upper rim of the tire but leave bottom rim for support. Used tire shall be free of cuts, rips and holes. Tread shall not be work beyond tread depth.
An NRCS representative will measure each tank as installed.

As Built Tank

Tank	d ₁ Ft.	d ₂ Ft.	d ₃ Ft.	h ₁ Ft.	h ₂ Ft.	Gallons



Date _____
 Designed _____
 Drawn Cassie Ahmed 03-22-2024
 Checked _____
 Approved _____

RUBBER TIRE STOCKWATER TANK
 OWNER: _____
 COUNTY: _____

United States Department of Agriculture
 Natural Resources Conservation Service

File Name ND-DWG-107
 Date 03-22-2024
 Sheet of _____