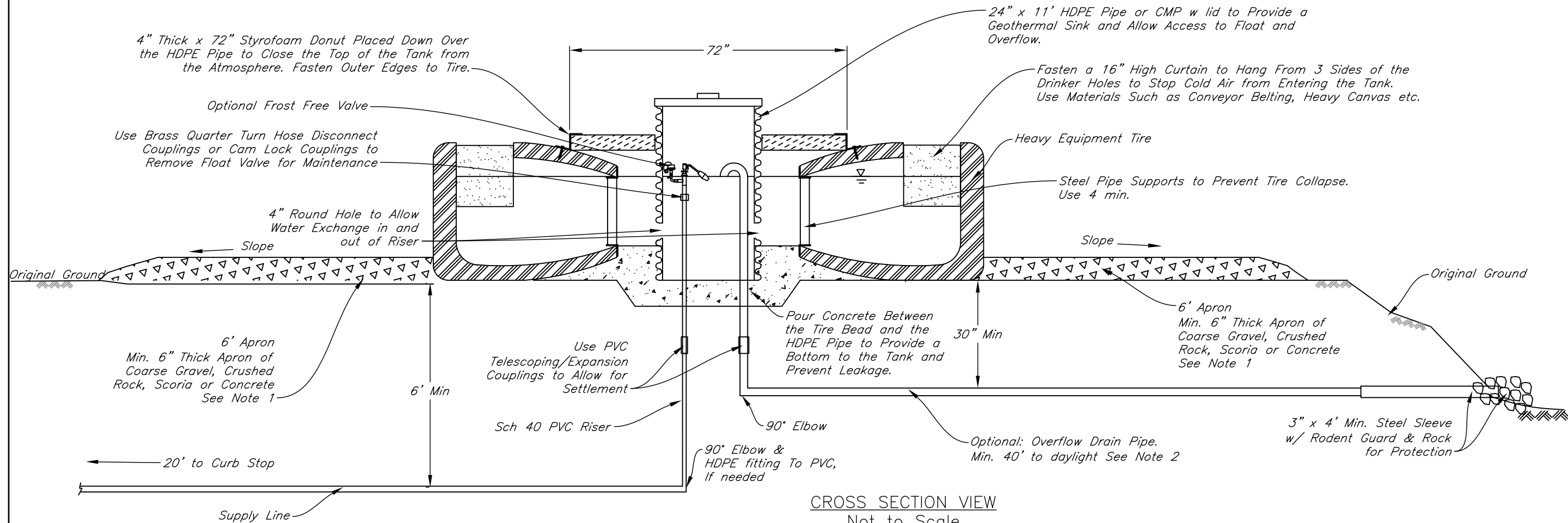


PLAN VIEW  
Not to Scale

CONSTRUCTION NOTES

1. In all cases the tank and apron area shall be stripped of all organics and the tank placed on a stable, well compacted foundation. Install min 6" of compacted fine gravel or sand on sites with clay soils with high shrink/swell potential. 2" Max. Dia. gravel. Optional on lighter or gravelly soils with little or no potential for shrink/swell. And in accordance with manufacturer's recommendations.
2. An overflow and drain pipe Sch 40 PVC or HDPE with a minimum 2" diameter or at least 1/2" Dia. larger than the supply line, must be installed if the water level in the tank is not controlled with a float. The drain pipe shall be graded to allow drainage and a min. of 40' from the tank. Protect drain pipe at outlet end by backfilling over pipe with field stone.
3. Optional tank cover materials may include R R ties, plank, earth, rock, ect.
4. Hydrant and float or overflow must be protected.
5. Straw bales may be used for insulation over the top.
6. PVC pipe shall be made of ultraviolet (UV) resistant materials or shall have a durable coating of UV resistant paint to protect it from deterioration due to sunlight. PVC pipe used for access to appurtenances is exempt from this requirement.



CROSS SECTION VIEW  
Not to Scale

Date \_\_\_\_\_  
 Designed \_\_\_\_\_  
 Drawn Cassie Ahmed 03-22-2024  
 Checked \_\_\_\_\_  
 Approved \_\_\_\_\_

WINTER TIRE TANK W HDPE RISER  
 OWNER: \_\_\_\_\_  
 COUNTY: \_\_\_\_\_



File Name  
ND-DWG-110  
 Date  
03-22-2024  
 Sheet of \_\_\_\_\_