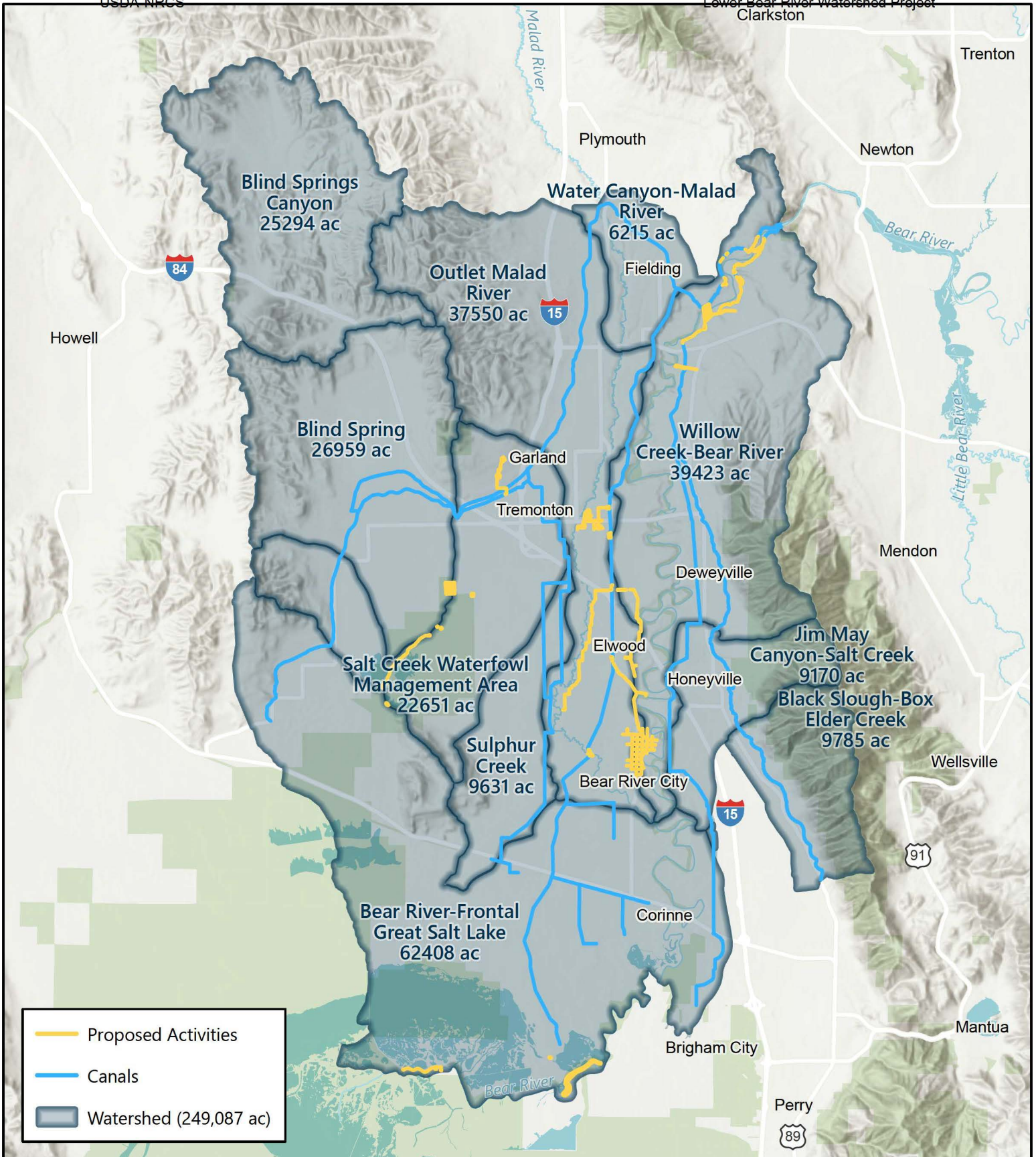


Appendix B. Project Maps

Table of Contents

Map 1—Lower Bear River Watershed Map	B-2
Map 2—Preferred Alternative Map—Hammond & West Main Canals Improvements (Alternative 2)	B-4
Map 3—Preferred Alternative Project Measure Map—BRCC Hammond and West Main Improvements.....	B-6
Map 4—Preferred Alternative Project Measure Map—BRCC Hammond and West Main Improvement Segments.....	B-8
Map 5—Preferred Alternative Project Measure Map—BRCC Red Siphons	B-10
Map 6—Preferred Alternative Project Measure Map—Bear River City Pressure Irrigation ...	B-12
Map 7—Preferred Alternative Project Measure Map—Highland Ditch Piping.....	B-14
Map 8—Preferred Alternative Project Measure Map—Central Canal Company Piping	B-16
Map 9—Preferred Alternative Project Measure Map—Tremonton Pressure Irrigation Improvements.....	B-10
Map 10—Preferred Alternative Project Measure Map—Tremonton Irrigation Storage	B-20
Map 11—Preferred Alternative Project Measure Map—Bear River Club Levee Improvements	B-22
Map 12—Preferred Alternative Project Measure Map—Chesapeake Duck Club Levee Improvements.....	B-24
Map 13—Preferred Alternative Project Measure Map—Salt Creek Waterfowl Management Area Levee Improvements and Sediment Basin Installation.....	B-26
Map 14—Benefited Areas Map	B-28

Map 1—Lower Bear River Watershed Map



LOWER BEAR RIVER WATERSHED



Map 2—Preferred Alternative Map—Hammond & West Main Canals Improvements (Alternative 2)

PROPOSED ACTIVITY BY PURPOSE

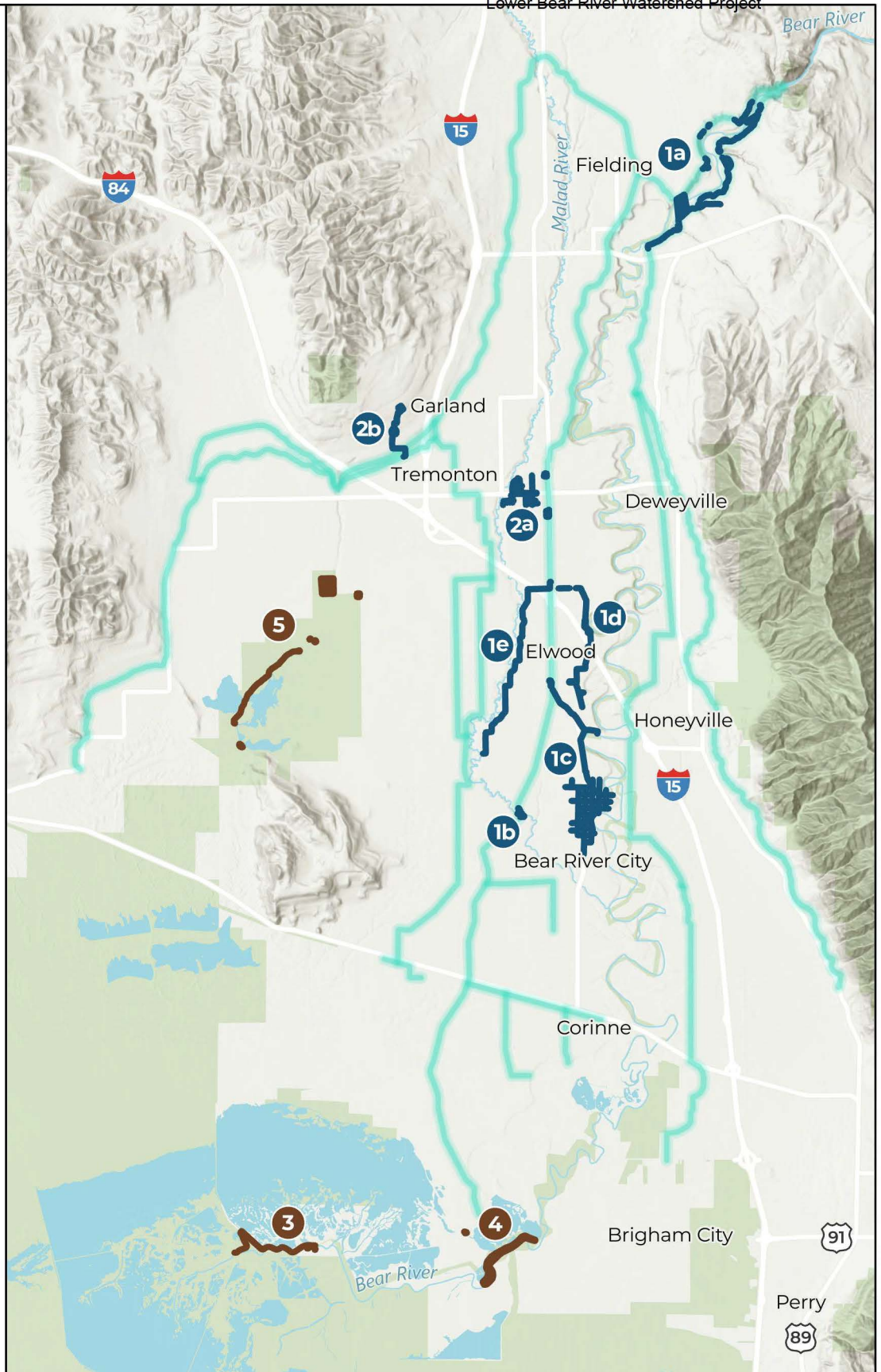
Agricultural Water Management

Bear River Canal Company (BRCC) Irrigation Delivery System Improvements

- 1a** BRCC Hammond and West Main Improvements
- 1b** BRCC Red Siphon
- 1c** Bear River City Pressure Irrigation
- 1d** Highland Ditch Piping
- 1e** Central Canal Company Piping
- 2a** Tremonton PI Improvements
- 2b** Tremonton Irrigation Storage

Watershed Protection

- 3** Bear River Club Levee Improvements
- 4** Chesapeake Duck Club Levee Improvements
- 5** Salt Creek WMA Levee Improvements and Sediment Removal





PREFERRED ALTERNATIVE—HAMMOND & WEST MAIN CANALS IMPROVEMENTS (ALTERNATIVE 2)

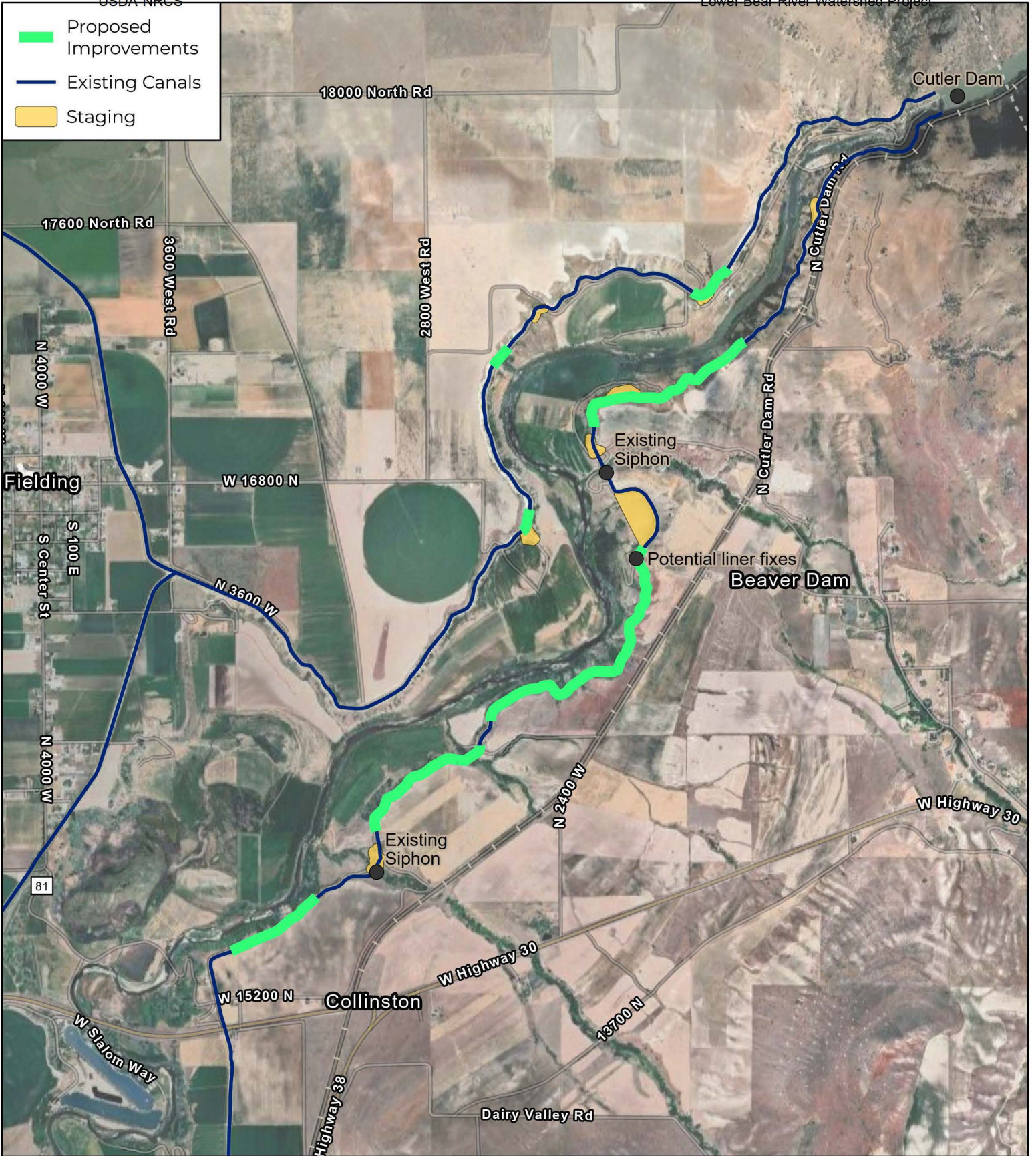
Lower Bear River Watershed EIS



October 2025

Map 3—Preferred Alternative Project Measure Map—BRCC
Hammond and West Main Improvements

 Proposed Improvements
 Existing Canals
 Staging



BRCC IRRIGATION DELIVERY SYSTEM IMPROVEMENTS

BRCC HAMMOND AND WEST MAIN IMPROVEMENTS PROPOSED ACTIVITIES

*Purpose: Agricultural Water Management
Lower Bear River Watershed EIS*

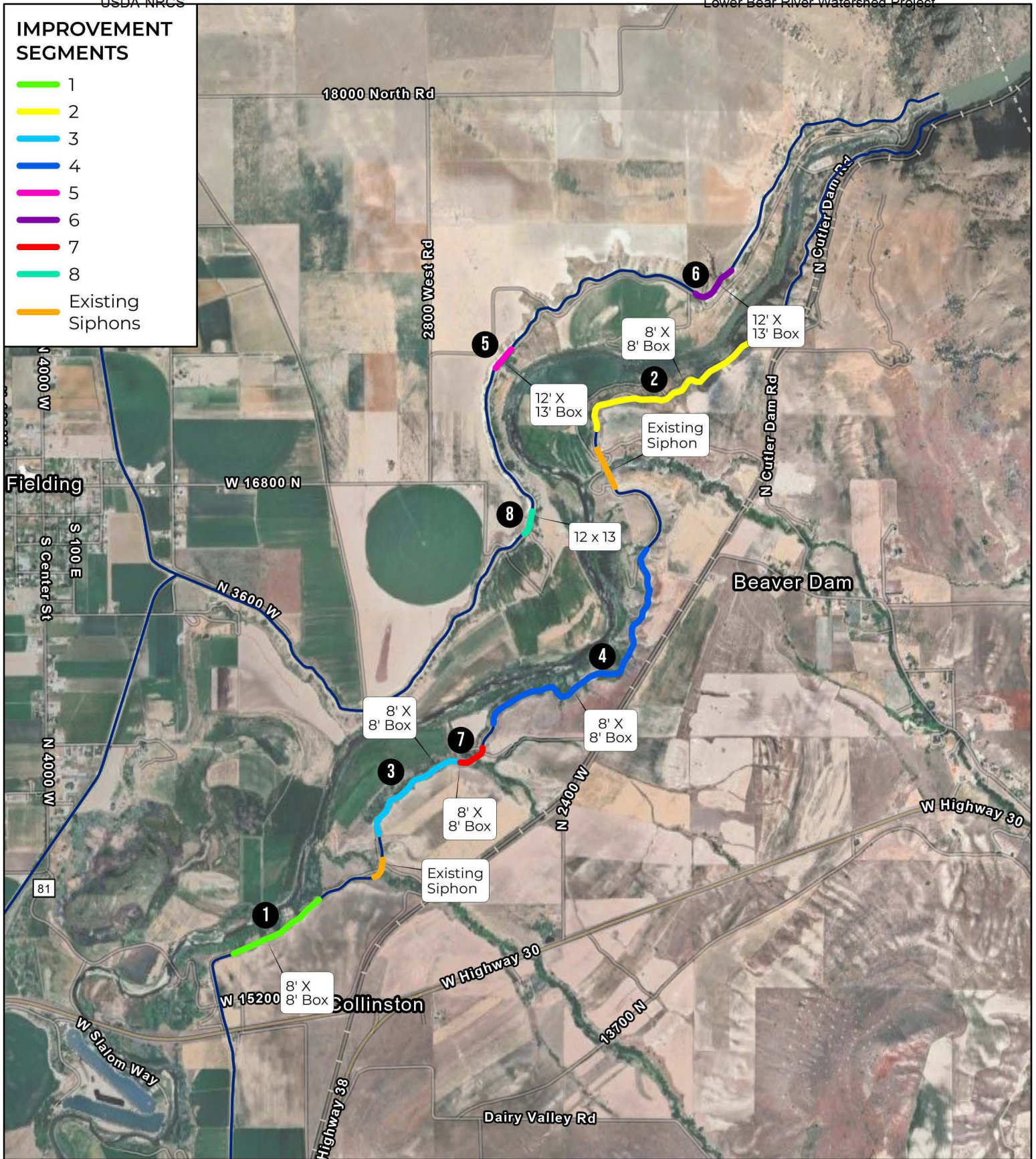


October 2025

Map 4—Preferred Alternative Project Measure Map— BRCC Hammond and West Main Improvement Segments

IMPROVEMENT SEGMENTS

- 1
- 2
- 3
- 4
- 5
- 6
- 7
- 8
- Existing Siphons



BRCC IRRIGATION DELIVERY SYSTEM IMPROVEMENTS



BRCC HAMMOND AND WEST MAIN IMPROVEMENT SEGMENTS PROPOSED ACTIVITIES

Purpose: Agricultural Water Management
Lower Bear River Watershed EIS



October 2025

Map 5—Preferred Alternative Project Measure Map—BRCC Red Siphons

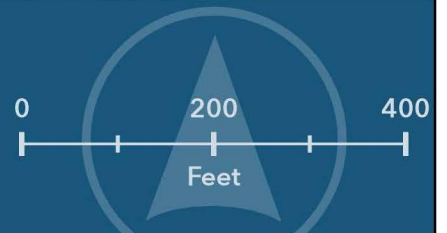
 Proposed Siphon
 Staging



BRCC IRRIGATION DELIVERY SYSTEM IMPROVEMENTS

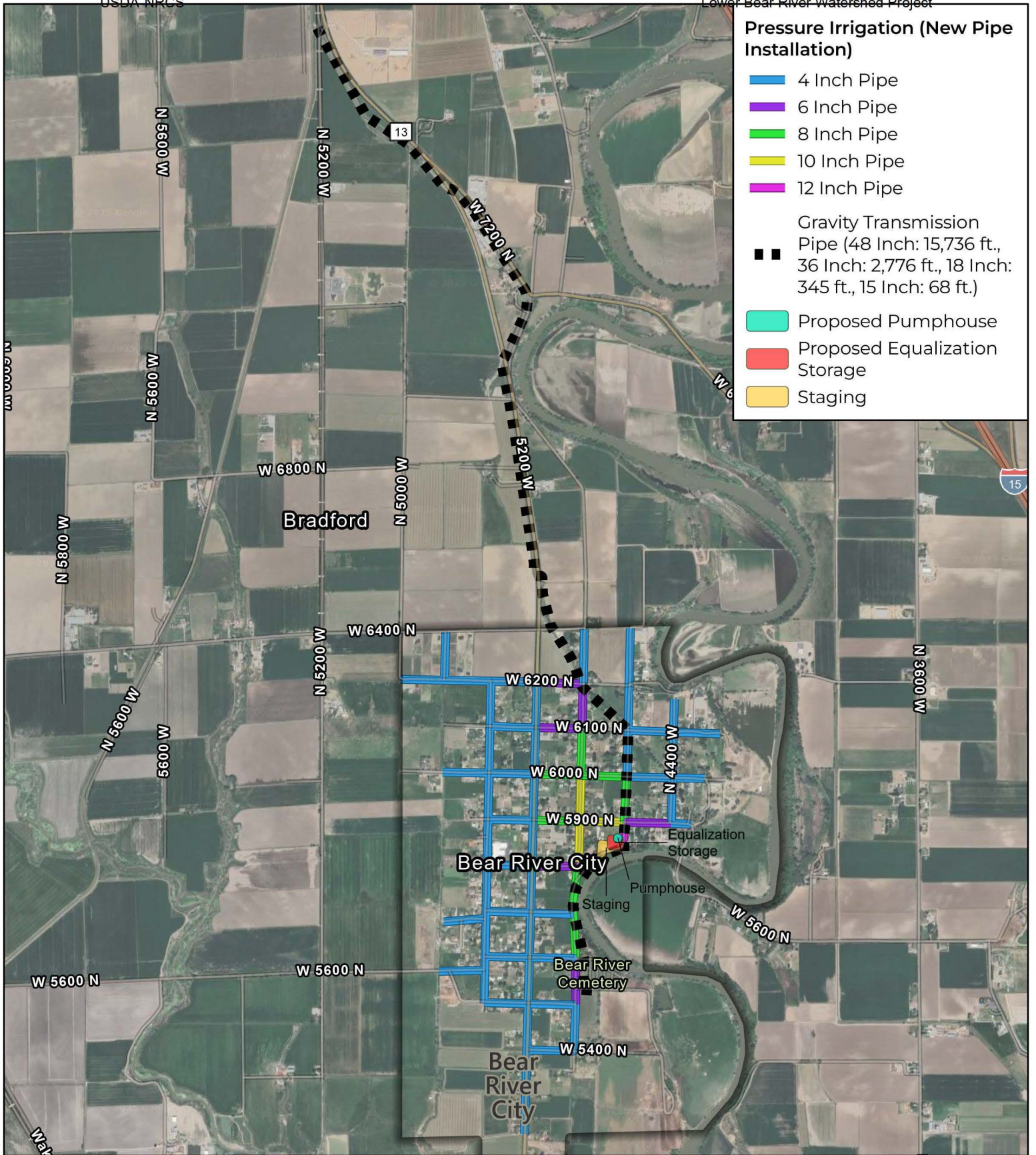
**BRCC RED SIPHON
PROPOSED ACTIVITIES**

*Purpose: Agricultural Water Management
Lower Bear River Watershed EIS*



October 2025

Map 6—Preferred Alternative Project Measure Map—Bear River City Pressure Irrigation



Pressure Irrigation (New Pipe Installation)

- 4 Inch Pipe
- 6 Inch Pipe
- 8 Inch Pipe
- 10 Inch Pipe
- 12 Inch Pipe

Gravity Transmission Pipe (48 Inch: 15,736 ft., 36 Inch: 2,776 ft., 18 Inch: 345 ft., 15 Inch: 68 ft.)

- Proposed Pumphouse
- Proposed Equalization Storage
- Staging

BRCC IRRIGATION DELIVERY SYSTEM IMPROVEMENTS

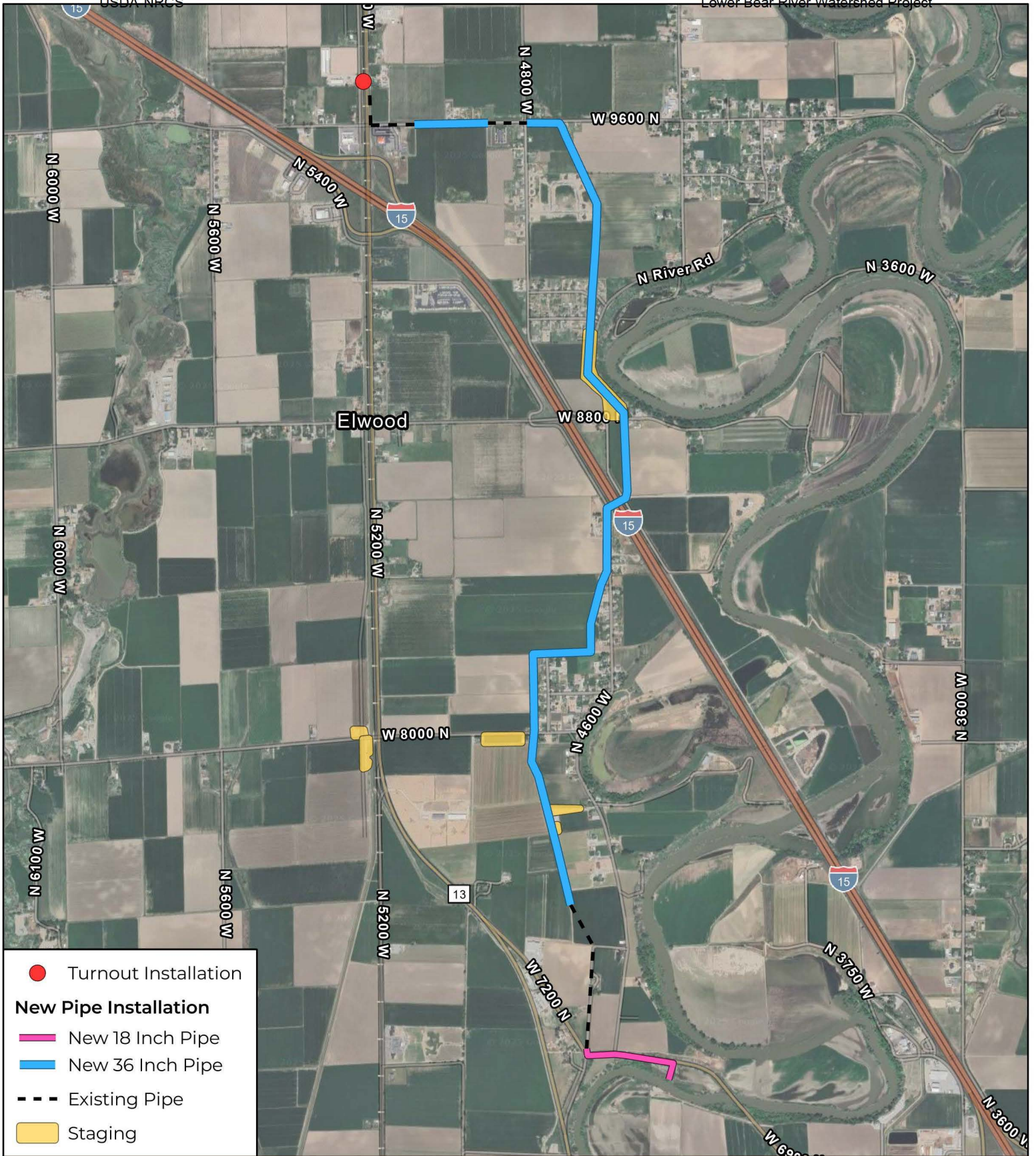
**BEAR RIVER CITY
PRESSURE IRRIGATION
PROPOSED ACTIVITIES**

*Purpose: Agricultural Water Management
Lower Bear River Watershed EIS*



October 2025

Map 7—Preferred Alternative Project Measure Map—Highland Ditch Piping



- Turnout Installation
- New Pipe Installation**
- New 18 Inch Pipe
- New 36 Inch Pipe
- Existing Pipe
- Staging

BRCC IRRIGATION DELIVERY SYSTEM IMPROVEMENTS

HIGHLAND DITCH PIPING PROPOSED ACTIVITIES

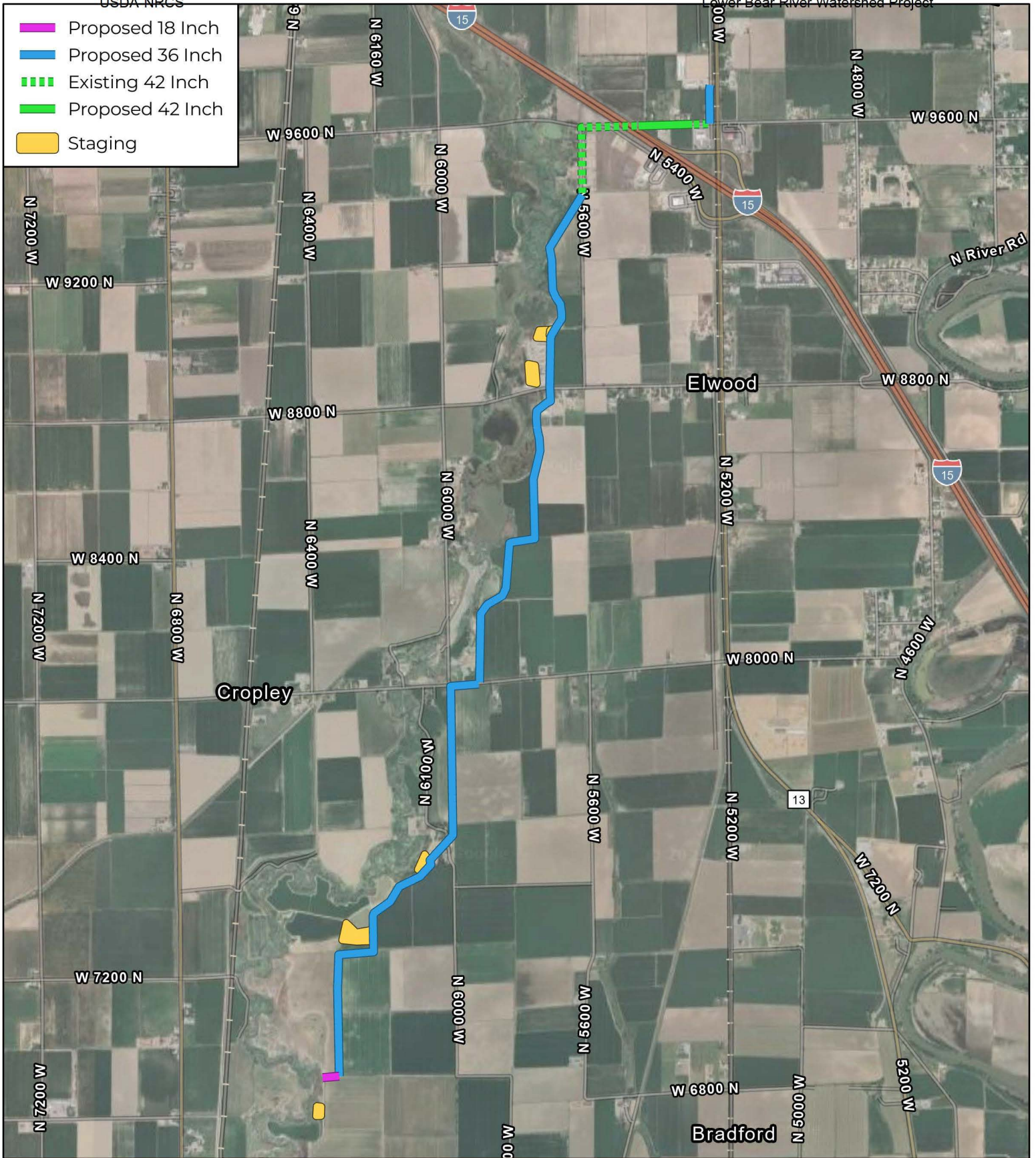
*Purpose: Agricultural Water Management
Lower Bear River Watershed EIS*



October 2025

Map 8—Preferred Alternative Project Measure Map—Central Canal Company Piping

- Proposed 18 Inch
- Proposed 36 Inch
- Existing 42 Inch
- Proposed 42 Inch
- Staging



BRCC IRRIGATION DELIVERY SYSTEM IMPROVEMENTS





CENTRAL CANAL COMPANY PIPING PROPOSED ACTIVITIES

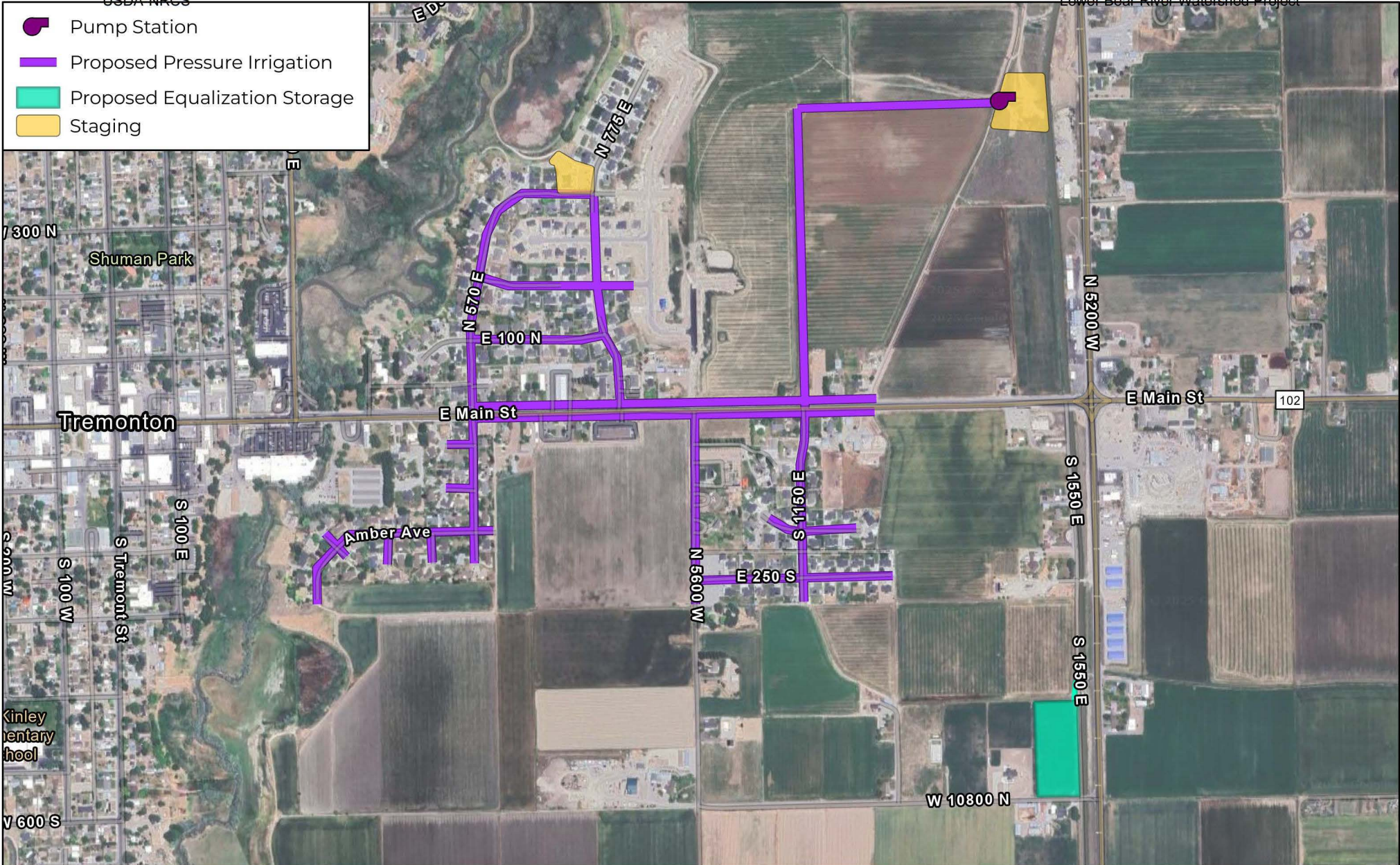
Purpose: Agricultural Water Management
Lower Bear River Watershed EIS



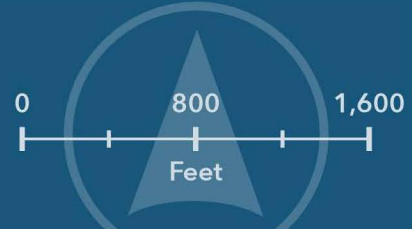
October 2025

Map 9—Preferred Alternative Project Measure Map—Tremonton Pressure Irrigation Improvements

-  Pump Station
-  Proposed Pressure Irrigation
-  Proposed Equalization Storage
-  Staging







TREMONTON PI IMPROVEMENTS PROPOSED ACTIVITIES

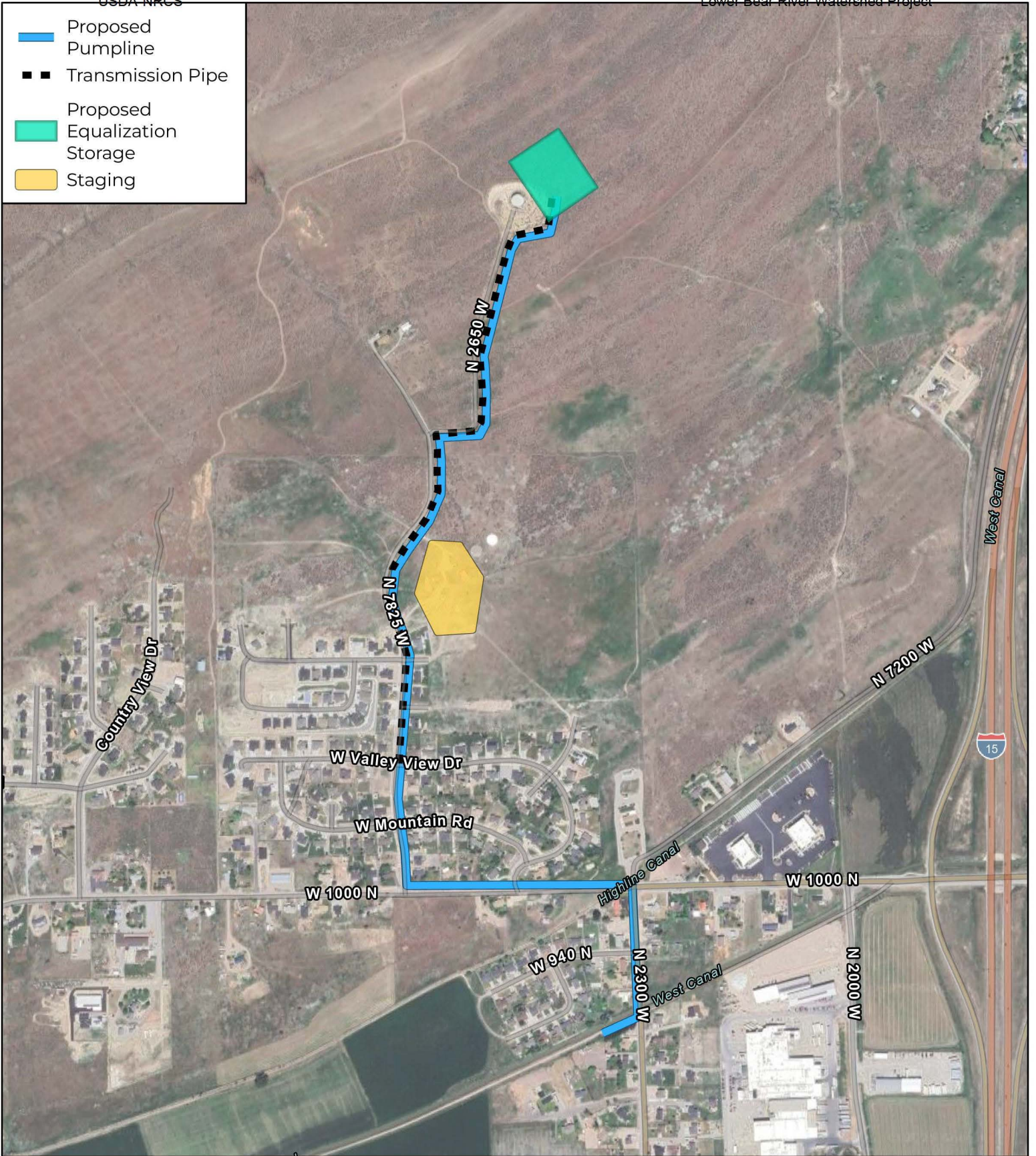


*Purpose: Agricultural Water Management
Lower Bear River Watershed EIS*

October 2025

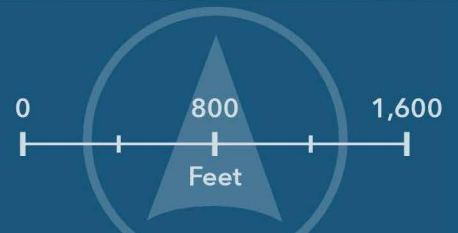
Map 10—Preferred Alternative Project Measure Map—Tremonton Irrigation Storage

-  Proposed Pumphline
-  Transmission Pipe
-  Proposed Equalization Storage
-  Staging



TREMONTON IRRIGATION STORAGE PROPOSED ACTIVITIES

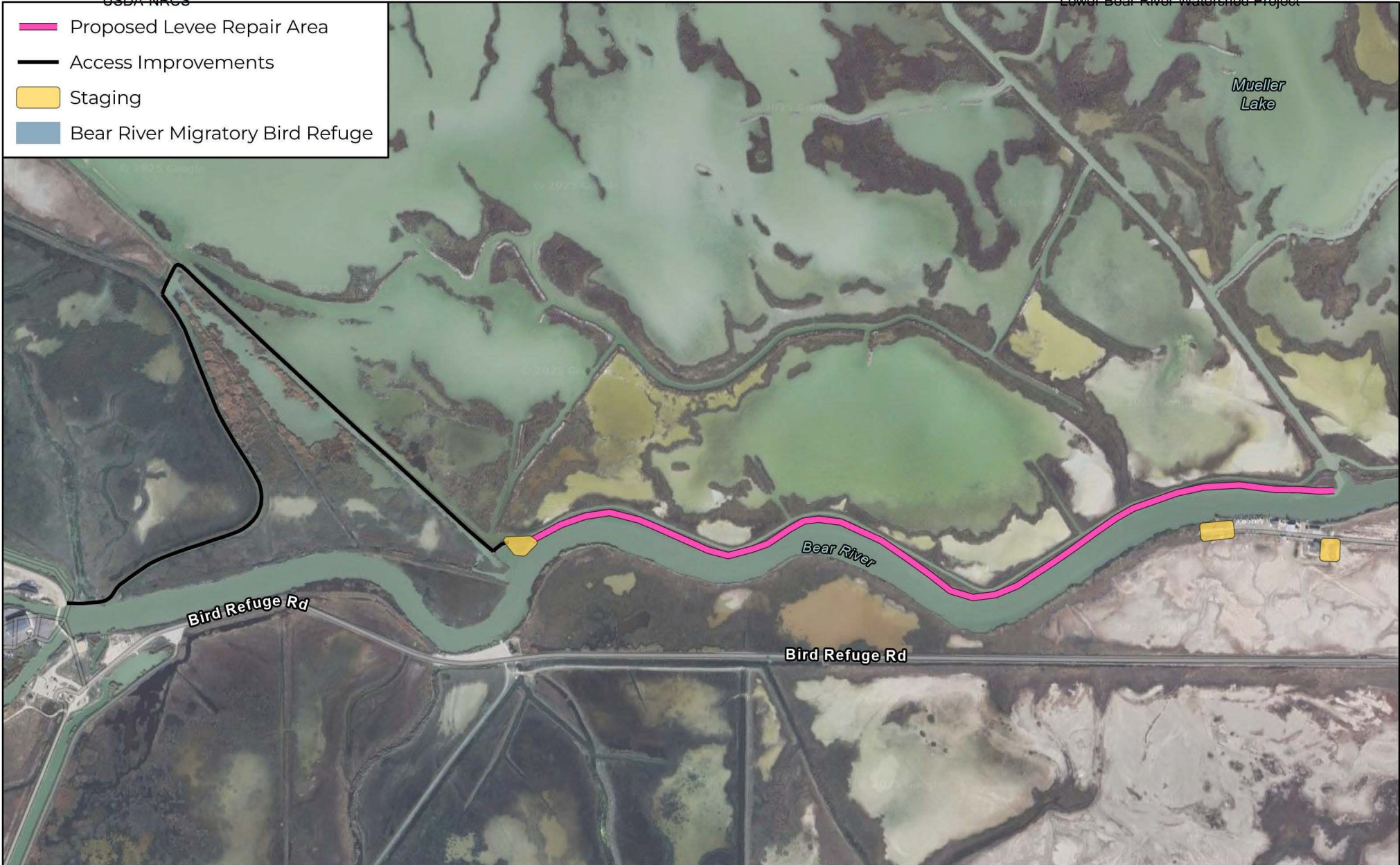
Purpose: Agricultural Water Management
Lower Bear River Watershed EIS



October 2025

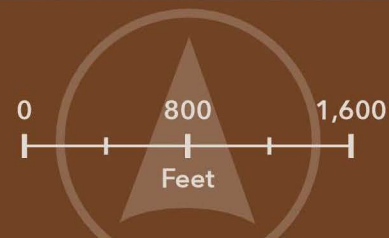
Map 11—Preferred Alternative Project Measure Map—Bear River Club Levee Improvements

-  Proposed Levee Repair Area
-  Access Improvements
-  Staging
-  Bear River Migratory Bird Refuge



BEAR RIVER CLUB LEVEE IMPROVEMENTS PROPOSED ACTIVITIES

*Purpose: Watershed Protection
Lower Bear River Watershed EIS*



October 2025

March 2026

Map 12—Preferred Alternative Project Measure Map—Chesapeake Duck Club Levee Improvements

- Proposed Levee
- Repair & Access Improvements
- Staging
- Bear River Migratory Bird Refuge



CHESAPEAKE DUCK CLUB LEVEE IMPROVEMENTS PROPOSED ACTIVITIES

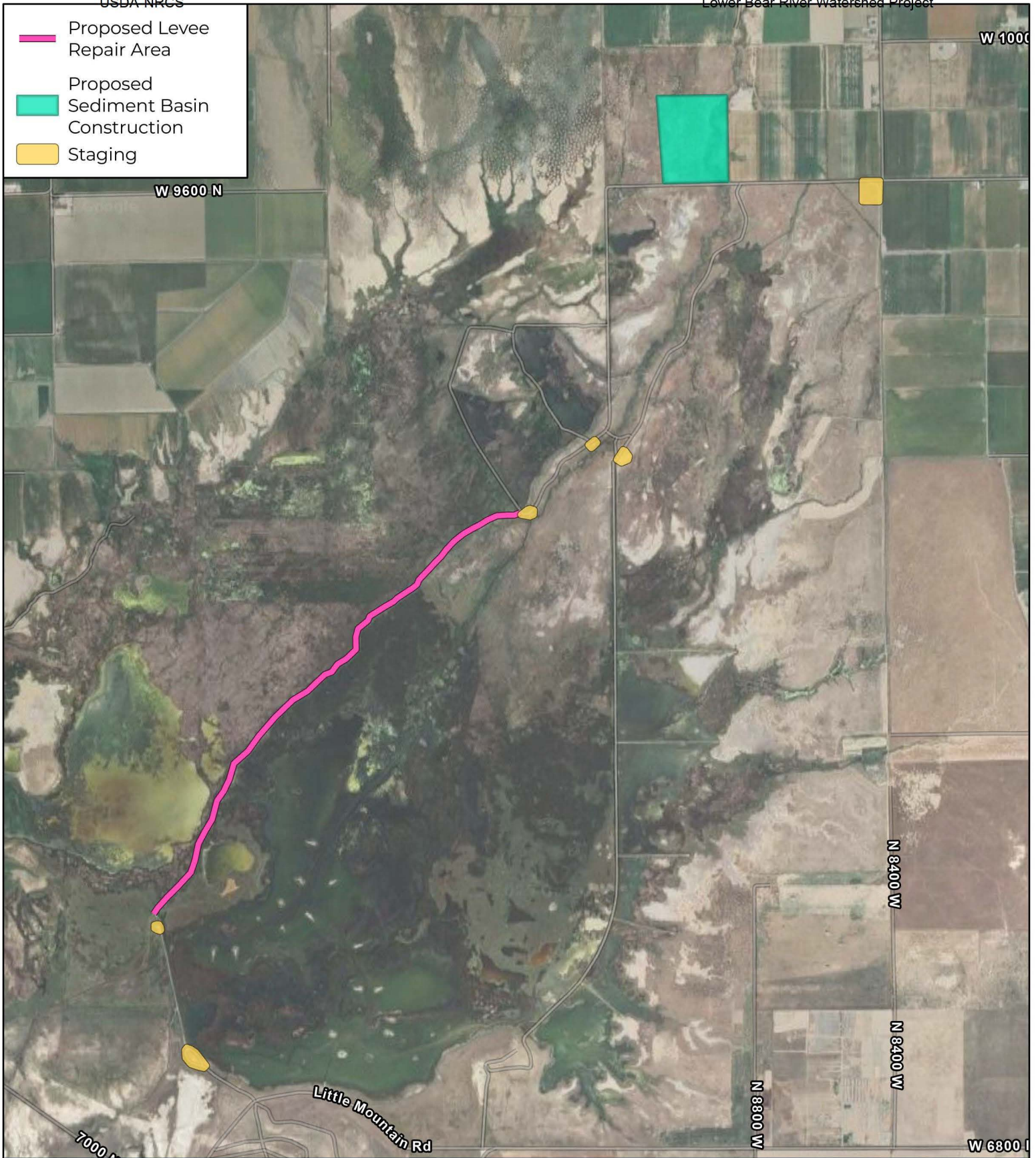
*Purpose: Watershed Protection
Lower Bear River Watershed EIS*



October 2025

Map 13—Preferred Alternative Project Measure Map—Salt Creek Waterfowl Management Area Levee Improvements and Sediment Basin Installation

-  Proposed Levee Repair Area
-  Proposed Sediment Basin Construction
-  Staging



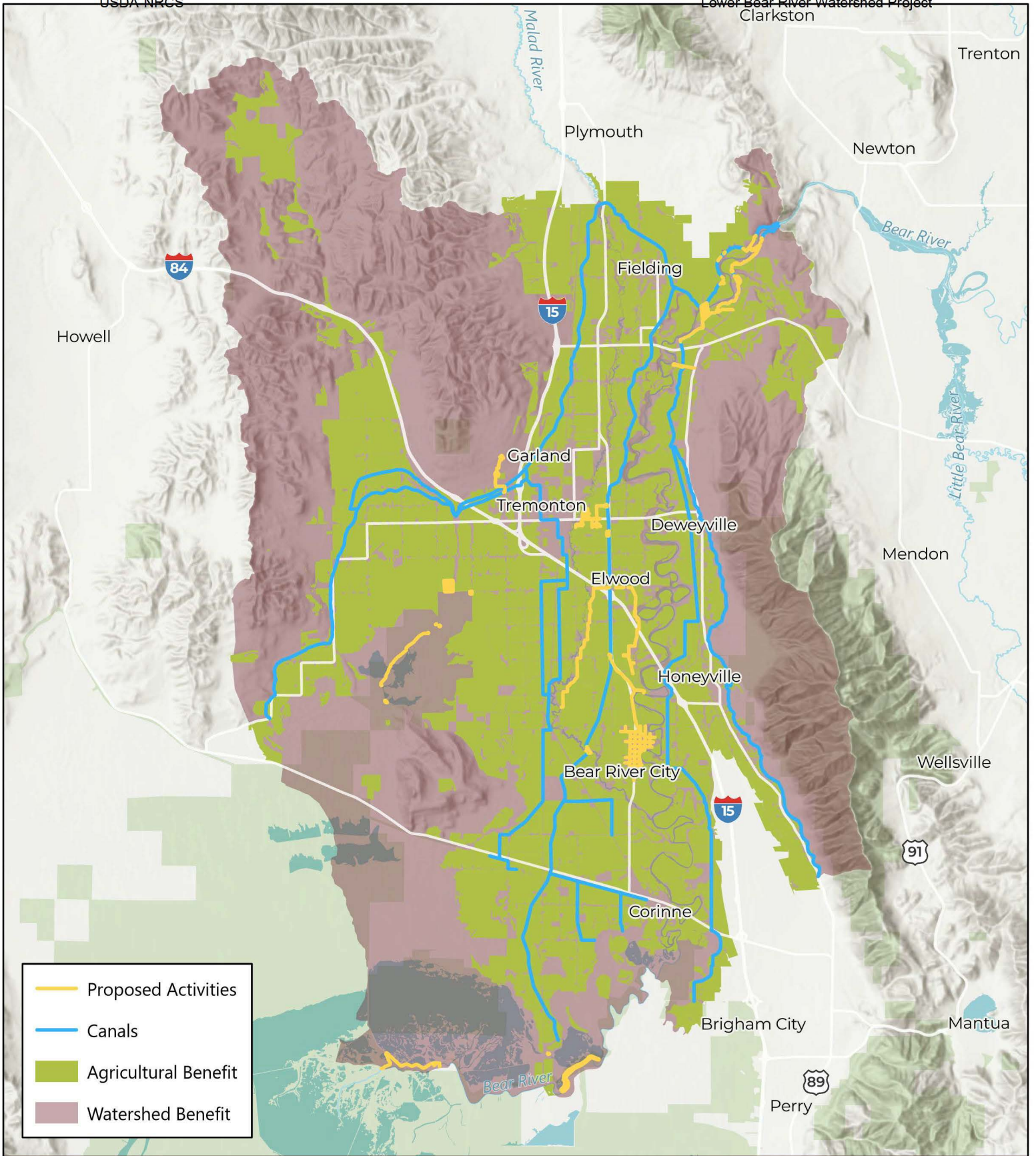
**SALT CREEK WATERFOWL
MANAGEMENT AREA LEVEE
IMPROVEMENTS AND SEDIMENT
BASIN INSTALLATION**





*Purpose: Watershed Protection
Lower Bear River Watershed EIS*



October 2025

Map 14—Benefited Areas Map



-  Proposed Activities
-  Canals
-  Agricultural Benefit
-  Watershed Benefit

BENEFITED AREAS

