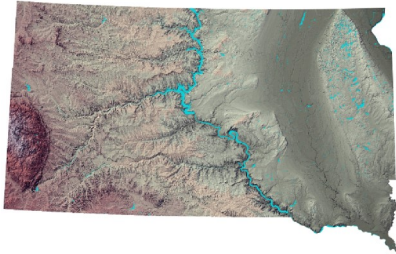


## Conservation Implementation Strategy Project

# Hecla Sandhills Prairie Management



For more information, go to:

<https://bit.ly/SDNRCS-CIS>

### This Project At-A-Glance

#### Partners

Audubon Dakota  
US Fish and Wildlife Service

**Funding** for this project is provided by the EQIP Program and partners with financial and in-kind contributions.

Contact:  
Marshall Johnson  
Executive Director Audubon Dakota  
[mejohanson@audubon.org](mailto:mejohanson@audubon.org)  
(701) 298-3373

The Conservation Implementation Strategy (CIS) is a new phased-in approach to deliver conservation programs to farmers and ranchers across South Dakota. Funding for CIS comes through the Environmental Quality Incentives Program (EQIP) and the Agricultural Conservation Easement Program (ACEP). Funding and support from other agencies and groups can be leveraged and coordinated to focus on mutual issues of the highest priority.

### Background

The Hecla Sandhills covers 220 acres with a majority of native prairie grasses. The area is surrounded by a more level to gently undulating topography with a high water table. The area also has numerous sub-irrigated meadow that is used as native hayland and pasture.

### Resource Concern(s)

The area is under threat through incompatible grazing and invasion of non-woody species, particularly Russian Olive. Less suitable grassland for grassland obligate bird species is negatively affected. These issues also impact the grassland species diversity, soil health, and vegetative productivity of the grassland.

### Goals

The Hecla Sandhills Prairie Management Toolbox, a new ecoregion conservation program, will build upon the South Dakota Prairie Management Toolbox to

allocate funds for statewide projects. The funds will help implement prescribed fire, invasive woody species removal, and grazing infrastructure on private lands.

### Desired Outcomes

At the end of the project, invasive woody vegetation will have been removed from 1,500 acres, and 3,000 acres will have improved grazing management through the addition of grazing infrastructure. There will also be improved native vegetation communities that will improve habitat for grassland birds.

South Dakota  
**Natural  
Resources  
Conservation  
Service**

[www.sd.nrcs.usda.gov](http://www.sd.nrcs.usda.gov)

