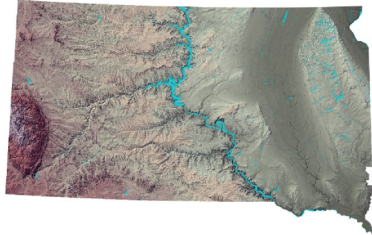


Conservation Implementation Strategy Project

Missouri River Riparian Habitat Restoration on the Lower Brule Indian Reservation



The Conservation Implementation Strategy (CIS) is a new phased-in approach to deliver conservation programs to farmers and ranchers across South Dakota. Funding for CIS comes through the Environmental Quality Incentives Program (EQIP) and the Agricultural Conservation Easement Program (ACEP). Funding and support from other agencies and groups can be leveraged and coordinated to focus on mutual issues of the highest priority.

For more information, go to:

<https://bit.ly/SDNRCS-CIS>

This Project At-A-Glance

Partners

Lower Brule Sioux Tribe
US Army Corps of Engineers,
Omaha District

Funding for this project is provided by the EQIP Program and partners with financial and in-kind contributions.

Contact:
Joel Bich
Project Manager Department of
Wildlife, Fish, and Recreation
Lower Brule Sioux Tribe
joelbichwfr@gmail.com
(605) 730-0751

Background

The Missouri River riparian bottomland forests provided a diverse and unique habitat for a variety of wildlife species as the river wound its way through the otherwise treeless grasslands. With completion of the four main stem dams, 116,530 acres of cottonwood and associated shrubs species were lost; approximately 70-80 percent of the habitat. Native American communities, including the Lower Brule Sioux Tribe, depending on these rich habitats for foods, shelter, medicines, livestock protection, and firewood; these river bottoms and islands were the focal point of Tribal culture.

Resource Concern(s)

The concern is the degradation of this specific ecosystem and unique plant community of the Missouri River bottomland habitat along with the rich mosaic of riparian, wetland, and upland habitat types and the associated wildlife species. The focus will be on cottonwood dominated forests along with historically present shrubs and vines.

Goal

The goal is to restore the riparian habitats while at the same time protecting the shoreline from wind-induced wave and ice erosion. This proposed project is part of a larger, long-term effort by Tribal and federal agencies.

Desired Results

This project will be a multiple-benefit wildlife habitat recreation land area, as well as, reconnection of the Tribal community with the river, especially because of its close proximity to the town of Lower Brule which is where the vast majority of Tribal members reside. This project will also be available for visitors to enjoy including the viewshed, swim beach, boat ramp, and walking trail.

South Dakota
**Natural
Resources
Conservation
Service**

