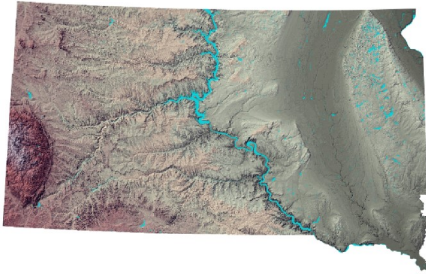


Conservation Implementation Strategy Project

Upper Cheyenne River Breaks



The Conservation Implementation Strategy (CIS) is a new phased-in approach to deliver conservation programs to farmers and ranchers across South Dakota. Funding for CIS comes through the Environmental Quality Incentives Program (EQIP) and the Agricultural Conservation Easement Program (ACEP). Funding and support from other agencies and groups can be leveraged and coordinated to focus on mutual issues of the highest priority.

For more information, go to:

<https://bit.ly/SDNRCS-CIS>

This Project At-A-Glance

Partners

East Pennington Conservation District

Funding for this project is provided by the EQIP Program and partners with financial and in-kind contributions.

Contact:
Lynn Schell
District Conservationist USDA-NRCS
lynn.schell@usda.gov
(605) 279-2451

Background

Rangeland health is suffering due to inadequate grazing distribution, livestock water, and shelter. The Upper Cheyenne River Breaks Project area is directly adjacent to the Cheyenne River, consequently, runoff from degraded rangeland and cropland impacts the river's water quality. Much of the target area has a history of overgrazing. Due to the rough terrain of the river breaks, it is difficult to achieve optimal grazing distribution.

Resource Concern(s)

The resource concern is the degradation of plant condition and plant productivity and health. Also sheet, rill, and wind erosion is an issue to include inadequate shelter, water, and feed and forage for livestock. Water quality is a concern with excess sediment in surface water, also fish and wildlife have inadequate habitat.

Goal

The project area is being targeted as it is a small portion of the land area adjacent to the Cheyenne River. There is significant interest from a few landowners. This would be a small project in order to gain awareness to initiate a larger project to improve the natural resources along the upper Cheyenne River.

Desired Results

The final state of the project is to improve the rangeland and soil health. By cross-fencing, adding livestock water storage, pipelines, tanks, and livestock shelter structures, the participants will have more seasonal grazing options in order to improve their rotations. Rangeland health improvement will increase habitat for rangeland birds and other wildlife and will positively affect carbon sequestration.

South Dakota
**Natural
Resources
Conservation**

